

2021-2022
Axtell High School
Enrollment Handbook



**Life is a matter of choices,
and every choice you
make, makes you.**

—John C. Maxwell—

2021-2022 Table of Contents

A.	Welcome	page 3
B.	Individual Plan of Study	page 4
C.	United States Bureau of Labor Statistics Education & Earning Information	page 5
D.	College & Career Competency Wheel	page 6
E.	USD 113 Graduation Requirements	page 7
F.	Qualified Admissions & Kansas Scholars/State Scholarship Program	pages 8-10
G.	NCAA	pages 11-17
H.	NAIA	page 18
I.	Course Descriptions	pages 19-31
	a. Required & Elective Courses	
	b. Career & Technical Education Pathways	
	c. Additional Elective Options	
J.	Special School Information	pages 32
K.	Credit Check —Worksheet	page 33-34
L.	General Enrollment Instructions	page 35
M.	8 th Grade Enrollment Notes	page 36
N.	Question Form	page 37

Welcome to **Axtell High School!**

The four years spent at the high school level should be filled with positive memories of the experience, yet it is necessary to realize the importance of the many decisions you will be making during this part of your life. These choices will fall into the categories of academic development, social & emotional development and career development. While this handbook addresses each area, the primary focus is to foster knowledge of the academic possibilities available at **Axtell High School**. Please review the enrollment handbook so that you can make the BEST DECISIONS related to your four-year educational plan.

To start with the 2021-2022 school year, note the following steps in selecting your classes:

1. Mark all required courses for USD 113 graduation first.
2. Consider other requirements:
 - a. Qualified Admissions (ACT AND GPA requirements for admission to Emporia State University, Fort Hays State University, Kansas State University, Pittsburg State University, University of Kansas & Wichita State University).
 - b. Kansas Scholars (recommended pre-college curriculum by the Kansas Board of Regents AND required for the State Scholarship Program).
 - c. NCAA & NAIA (no curriculum requirement for NAIA).
3. Mark the courses related to your career path.
4. Plan for/write in make-up courses.

Please be aware that it may be difficult for you to fit desired upper level elective classes into your schedule. Therefore, **YOU MUST PROVIDE TWO ALTERNATE CLASSES** in the event initial course requests cannot be fulfilled on the master schedule. **NOTE:** These alternates will be considered & inserted when the final schedule is determined.

With the *seven/eight* period schedule, you should find it possible to challenge yourself academically and still have room to pursue courses that tap into individual skills & abilities; interests & hobbies; post-secondary plans; school content areas you enjoy; and other areas deemed “non-required.” I encourage you to set an educational goal, be proactive with your academic planning, and work hard throughout your high school career so that when you graduate, you are fully prepared for post-secondary life.

If you or your parents/guardians have questions or concerns regarding your academic planning, you are encouraged to contact Axtell High School at 785-736-2237.

Planning is a process of choosing among those many options. If we do not choose to plan, then we choose to have others plan for us.

—Richard I. Winwood—

Individual Plans of Study

Xello is the platform USD 113 has purchased to help students in the creation of their Individual Plan of Study, a document REQUIRED of all students in Kansas. KSDE defines an Individual Plan of Study (IPS) as a “roadmap for success in high school and beyond.” Specifically, it includes the following components:

- Personal Data (name, address, parent/guardian, etc.)
- Educational History (elementary, middle & high schools you have attended)
- Credit History (have you earned passing grades? will you complete your chosen curriculum in your four years of high school?)
- Learning Styles (how do you learn best & how do you apply that to your current education?)
- Career Interests (in what career areas do you have an interest? do your career assessment results match your interests?)
- Relevant Assessment Results (what does your assessment data tell you about your strengths & weaknesses? likes & dislikes?)
- Career Clusters & Personal Plans (visit <https://careertech.org/careerclusters> to learn more about Career Clusters & recommended courses)
- Six Year High School/Postsecondary Plan (careful planning in high school will BEST prepare you for postsecondary life!)
- School & Community Activities (seek out opportunities to better your school & community)
- Work & Volunteer Experience (explore local work & volunteer opportunities)
- Artifacts (i.e. photos, articles, links, reports, etc. that support your Individual Plan of Study)
- Eportfolio (professional materials ☺ cover letter, resume, letter of recommendation; supporting evidence in the above areas; etc.)
- School + Student + Family engagement in the above areas

Be intentional & efficient with the development & process of your Individual Plan of Study.

Everything you do throughout your high school years has a place in your IPS!

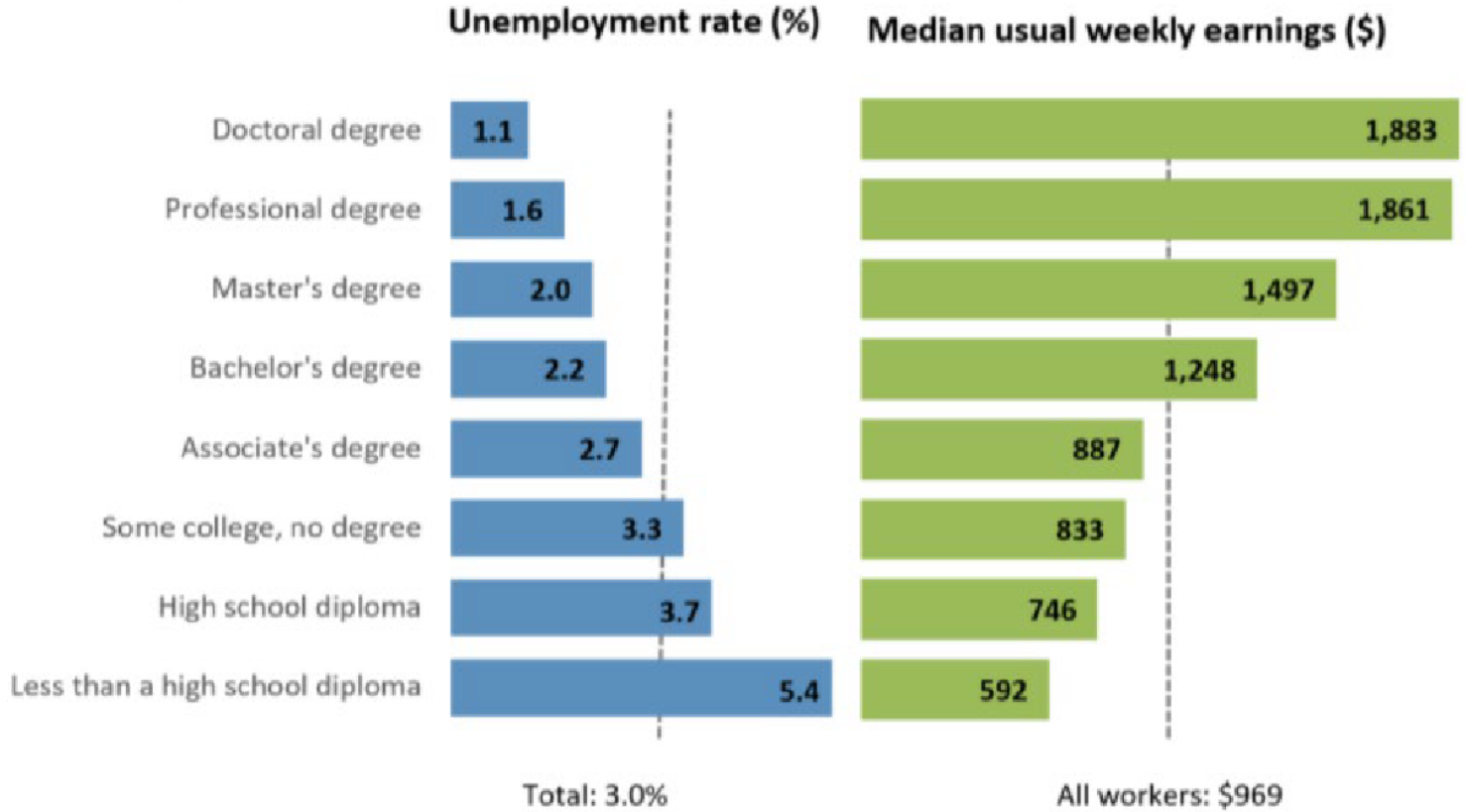
Xello can be accessed through the district website using your Google sign-in information.

If we could first know where we are, and whither we are tending, we could better judge what to do, and how to do it.

—Abraham Lincoln—

Employment Projections

Unemployment rates and earnings by educational attainment, 2019



Note: Data are for persons age 25 and over. Earnings are for full-time wage and salary workers.
 Source: U.S. Bureau of Labor Statistics, Current Population Survey.

[Data Table](#)

These education categories reflect only the highest level of education attained. They do not take into account completion of training programs in the form of apprenticeships and other on-the-job training, which may also influence earnings and unemployment rates. For more information on training, see:

http://www.bls.gov/emp/ep_education_training_system.htm.

BLS has some data on the [employment status](#) of the civilian noninstitutional population 25 years and over by educational attainment, sex, race, and Hispanic origin online.

The Census Bureau also has some data on [educational attainment](#) online.

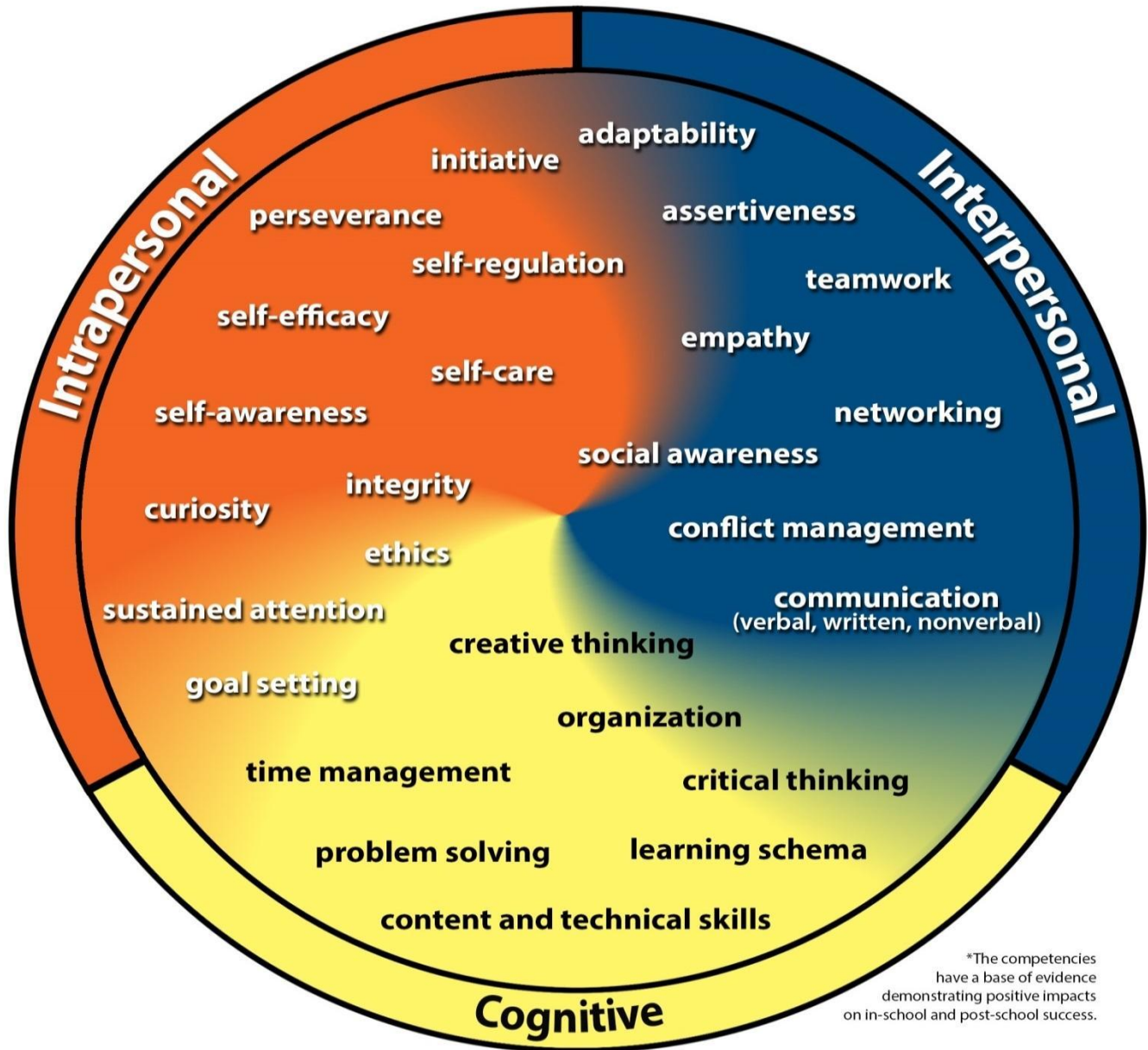
Last Modified Date: September 4, 2019

U.S. Bureau of Labor Statistics | Office of Occupational Statistics and Employment Projections,
 PSB Suite 2135, 2 Massachusetts Avenue, NE Washington, DC 20212-0001
www.bls.gov/EMP | Telephone: 1-202-691-5700 | [Contact EMP](#)

Source: <https://www.bls.gov/emp/chart-unemployment-earnings-education.htm>

The College & Career Competency Wheel illustrated below identifies competencies high school students will continue to practice to prepare for post-secondary life.

College and Career Competency Wheel



Gaumer Erickson, A.S., Noonan, P., & Soukup, J.H. (2016). College & Career Competency Wheel (3rd ed.). Lawrence, KS: University of Kansas, Center for Research on Learning. Derived in part from Pellegrino, J.W., & Hilton, M.L. (Eds.). (2012). *Education for Life and Work: Developing Transferable Knowledge and Skills in the 21st Century*. Washington, DC: National Academies Press.

For more information, visit:

<http://ResearchCollaboration.org/page/CCCFramework>



USD 113 GRADUATION REQUIREMENTS

USD 113 requires 25 credits for graduation. Each student in grades 9-12 must enroll in a minimum of 7 credits each year unless classified as a Special Student (senior privilege only; form required).

GRADUATION REQUIREMENTS

- 4 credits of English/Language Arts**—English 1, English 2, English 3 + 1 additional credit (4th credit options: Advanced Composition, Speech [.5 credit only])
- 3 credits of Mathematics**—any three unique credits (Algebra 1, Algebra 2, Geometry, Trigonometry/College Algebra)
- 3 credits of Science**—Physical Science, Biology 1 + 1 additional credit (3rd credit options: Chemistry 1, Physics Anatomy/Physiology, Animal Science/Plant & Soil Science)
- 3 credits of Social Science**—World History, American History, American Government
- 1 credit of Consumer and Personal Finance**
- 1 credit of Fine Art***—options: Band, Concert Choir
- 1 credit of Physical Education**
- 9 credits of Electives****
- =25 credits to earn a USD 113 diploma

GRADE LEVEL ENROLLMENT REQUIREMENTS*

GRADE 9

English 1
Algebra 1
Physical Science
World History
Physical Education 1
2 electives*

GRADE 11

English 3
Algebra 2
3rd Science
American Government or AP US Govt. & Politics (Edgenuity)
3 electives*

GRADE 10

English 2
Geometry
Biology 1
American History
Consumer & Personal Finance
2 electives*




GRADE 12

Advanced Composition
6 electives*

*1 credit of Fine Art (Band, Concert Choir) needs to be taken within the four-year outline indicated above.

QUALIFIED ADMISSIONS

NOTE: Effective starting with the class of 2021, the six Kansas Regents Universities (Emporia State University, Fort Hays State University, Kansas State University, Pittsburg State University, Wichita State University, or the University of Kansas) **no longer requires** a pre-college curriculum for admission. Rather, the Kansas Scholars Curriculum is **highly recommended** for college preparedness. The new admissions requirements starting with the class of 2021 are:

INSTITUTION	ADMISSION REQUIREMENTS
 Emporia State University Fort Hays State University Pittsburg State University Wichita State University	21 ACT Composite OR 2.25 cumulative GPA AND 2.0 cumulative GPA on college courses taken in high school
 Kansas State University	21 ACT Composite OR 3.25 cumulative GPA AND 2.0 cumulative GPA on college courses taken in high school
 University of Kansas	21 ACT Composite AND 3.25 cumulative GPA OR 24 ACT Composite AND 3.0 cumulative GPA AND 2.0 cumulative GPA on college courses taken in high school

Any student who does not meet this criteria *may not be admitted -OR- have admission delayed!*

For more information related to Qualified Admissions, visit
https://www.kansasregents.org/qualified_admissions

KANSAS SCHOLARS CURRICULUM & STATE SCHOLAR PROGRAM

Completion of the Kansas Scholars Curriculum is one of the requirements Kansas residents must meet in order to receive State Scholar designation. This occurs during the senior year of high school.

What are the other requirements to become a State Scholar?

- Students must have taken the ACT between April of the sophomore year and December of the senior year.
- Students must be a Kansas resident.
- Students must have their curriculum and 7th semester GPA certified on the official roster school official.

Students that complete this curriculum and meet the other requirements, may be designated as State Scholars, which makes one eligible to receive the Kansas State Scholarship as provided by the Kansas Legislature. The academic profile of recent scholars include an average ACT of 30 and an average GPA of 3.91. State Scholars may receive up to \$1,000 annually for up to four undergraduate years (five, if enrolled in a designated five-year program), based on financial need and the availability of State funds. Financial need is measured by federal methodology using data submitted on the FAFSA.

The **Kansas Scholars Curriculum** includes the following courses:

1. 4 credits of English—English 1, English 2, English 3, English 4, Comp I (.5 credit only) & Comp II (.5 credit only), AP Eng Lang & Comp (**Edgenuity**).
2. 4 credits of Math—Algebra 1, Algebra 2, Geometry, Trigonometry/College Algebra.
3. 3 credits of Science—Biology 1, Chemistry 1 +**AND**+ Physics (**Edgenuity**).
4. 3 credits of Social Science—World History, American History, American Government **-OR-** AP US Govt & Politics (**Edgenuity**).
5. 2 credits of the same Foreign Language—Spanish 1 & Spanish 2.

For more information related to the Kansas Scholars Curriculum & State Scholar Program, visit:

https://kansasregents.org/students/student_financial_aid/kansas_scholars_curriculum

-OR-

https://kansasregents.org/students/student_financial_aid/scholarships_and_grants

NCAA

Axtell High School Information	
NCAA High School Code	170190
CEEB Code	170190
High School Name	AXTELL HIGH SCHOOL
Address	504 Pine St. AXTELL KS - 66403
Primary Contact Name	Alana Seddon
Primary Contact Phone	785-736-2237
Primary Contact Email	seddona@usd113.org
Secondary Contact Name	Deb Ronnebaum
Secondary Contact Phone	785-736-2237
Secondary Contact Email	ronnebad@usd113.org
School Website	http://www.usd113.org
Link to online course catalog/program of studies	Not Available
Last Update of List of NCAA Courses	08-Sep-20

Legal Disclaimer: The list of NCAA courses, and courses contained within, are maintained as a guide for prospective student-athletes seeking NCAA initial-eligibility. The list of approved courses does not, nor is intended to, signify accreditation, certification, approval or endorsement of any high school or specific courses by the NCAA or NCAA Eligibility Center and is subject to change at any time and without notice. Core course information included on this Web site is provided for guidance purposes only and should not be solely relied on as an indication of NCAA initial-eligibility. Certification of a prospective student-athlete is case-specific, and the Eligibility Center has the authority to determine in its sole discretion whether the prospective student-athlete has met all criteria.

NCAA legislation permits a student to receive credit for a core course only one time. As a result, if a student repeats a core course, the student will only receive credit once for the core course, and the highest grade earned in the course will be included in the calculation of the student's core course grade point average. Likewise, if a student completes a course that is duplicative in content with another core course, the student will only receive credit for one of the duplicative courses, and the course with the highest grade earned will be included in the calculation of the student's core course grade point average.

CREDIT RECOVERY EDGENUITY CLASSES ARE <i>NOT</i> NCAA APPROVED					
English	Social Science	Mathematics	Natural/Physical Science	Natural/Physical Science-LAB	Additional Core Courses
AP Eng Lang & Comp	American Government	Algebra 1	Anatomy/Physiology	X	Spanish 1
Composition I (.5 credit only) AND Composition II: Literature & Research (.5 credit only)	AP US Government & Politics	Algebra 2	Biology 1	X	Spanish 2
English 1	American History	College Algebra (.5 credit only)	Chemistry 1	X	
English 2	World History	Geometry	Physical Science	X	
English 3		Trigonometry (.5 credit only)	Physics	X	
English 4					
Speech (.5 credit only)					
DI—4 credits English	DI—2 credits Social Science	DI—3 credits Math	DI—2 credits Science		DI—1 additional English, Math or Science credits + DI—4 additional credits from any area listed
DII—3 credits English	DII—2 credits Social Science	DII—2 credits Math	DII—2 credits Science		DII—3 additional English, Math or Science credits + DII—4 additional credits from any area listed

COURSE DESCRIPTIONS

The following courses are *typically* offered on the **Axtell High School** schedule, though availability is contingent upon student demand. Please read through the course descriptions below to learn more about course content and to help make solid academic decisions for your high school plan.

Local Course Name	Local Course Number	State Course Code	Prerequisite(s)	R (required) + Grade Level OR E (elective) + Grade Level; credit value	Qualified Admissions (QA) Status—NOTE: These are subject to change!
-------------------	---------------------	-------------------	-----------------	--	---

ENGLISH/LANGUAGE ARTS

English 1	LA101A/LA101B	01001	Prerequisite(s): NA	R9—ELA—1 credit	QA—English
------------------	----------------------	--------------	-------------------------------	------------------------	-------------------

This course will provide students many opportunities to improve upon their reading, writing, and articulation skills. Student outcomes include literature, writing, grammar, vocabulary, public speaking, research, and novel reading.

English 2	LA102A/LA102B	01002	Prerequisite(s): English 1	R10—ELA—1 credit	QA—English
------------------	----------------------	--------------	--------------------------------------	-------------------------	-------------------

This course will provide students many opportunities to improve upon their reading, writing, and articulation skills. Student outcomes include literature, writing, grammar, vocabulary, public speaking, research, and novel reading.

English 3	LA103A/LA103B	01003	Prerequisite(s): English 2	R11—ELA—1 credit	QA—English
------------------	----------------------	--------------	--------------------------------------	-------------------------	-------------------

This course will provide students many opportunities to improve upon their reading, writing, and articulation skills. Student outcomes include literature, writing, grammar, vocabulary, public speaking, research, and novel reading.

Advanced Composition	LA105A/LA105B	01005	Prerequisite(s): English 3	12—4th ELA credit option—1 credit	QA—English
-----------------------------	----------------------	--------------	--------------------------------------	---	-------------------

COMPOSITION I (fall)/ COMPOSITION II: LITERATURE & RESEARCH (spring)	HCCENG101/ HCCENG102	01102	Prerequisite(s): Composition I: ACT English ≥ 18 OR qualifying ACCUPLACER score (taken at HCC campuses) OR qualifying ASSET score (taken with Sara Smith) OR 3.25 Cumulative GPA OR 3.0 Cumulative GPA + \geq 3.0 English 3 completion Composition II: C or above in Composition I	12—4th ELA credit option—1 credit
--	---------------------------------------	--------------	--	---

NOTE: *Comp I & Comp II are currently taught by Mrs. Broxterman in the same classroom as Advanced Composition.*

Comp I (*ENG101; S1*): This course provides instruction and practice in the principles of written composition. The major emphasis is on improving the ability to organize and express thoughts clearly and effectively. Students will be expected to write coherent essays that declare and support a thesis, as well as use and document research material. A reading text is used for criticism and discussion.

Comp II (*ENG102; S2*): This is the second of a two-course sequence in college English composition. The course will continue to emphasize improving the ability to organize and express thoughts in clear, effective writing. The course will use literature study as a basis for improving and extending research, critical analysis, and writing skills. The forms, elements, and techniques of literature will be examined in terms of how literature affects readers.

NOTE: Potential to earn 3 college credits through Highland Community College for ENG101 AND ENG102 (totaling 6 credits). Only students pursuing HCC credit will enroll in ENG101 & ENG102. HCC registration will occur TWO TIMES per year—spring/summer (*ENG101; enroll prior to the start of the school year*) & October-December (*ENG102; enroll prior to the start of the second semester*).

HCC PUBLIC SPEAKING/HCC Intro. To Literature Non-HCC Credit classes: Speech/Literature	HCCSP106/HCC ENG104 Non-HCC Credit classes: LA121/01052	01151/01052	Prerequisite(s): NA	11-12—4th ELA credit option (HCC Public Speaking/Speech)—.5 credit; 11-12—ELA credit option (HCC Introduction to Literature)—.5 credit
--	---	--------------------	-------------------------------	--

NOTE: *Public Speaking (HCC's SP106) & Literature (HCC's HCC104) will be taught by Mrs. Broxterman.*

HCC PUBLIC SPEAKING/SPEECH (SI): The purpose of this course is to increase student understanding of the principles and applications of public speaking through analysis and practice in the areas of communication theory, topic selection, audience analysis, research, use of support materials, content organization, presentation, and evaluation of a variety of speeches. Students will present individual speeches, as well as group discussion and activities, and debates.

Speaking Competencies

- A. Determine the purpose of oral discourse.
- B. Choose a topic and restrict it according to the purpose and the audience.
- C. Fulfill the purpose of oral discourse by:
 - 1. Formulating a thesis statement.
 - 2. Providing adequate support material.
 - 3. Selecting a suitable organizational pattern.
 - 4. Demonstrating careful choice of words.
 - 5. Providing effective transitions.
- D. Employ vocal variety in rate, pitch, and intensity.
- E. Articulate clearly.
- F. Employ language appropriate to the designated audience.
- G. Demonstrate nonverbal behavior that supports the verbal message.

NOTE: Public Speaking/Speech is paired with Intro. To Literature/Literature. Please REQUEST both courses on your schedule.

NOTE: HCCSP106=HCC credit. Speech=non-HCC credit. *HCC registration should occur in spring/summer prior to the start of the school year for fall SP106 enrollment.*

ENG 104 Intro to Literature/Literature

This course will enable the student to discuss and interpret representative English-language literary works in a variety of genres. The student will identify the use of literary elements; recognize relationships between writers, works, and socio-cultural contexts; and arrive at informed personal and critical interpretations. Various thematic approaches may be offered.

Composition for Publication-Technology (yearbook)	LA139A/LA139B	01103	Prerequisite(s): Teacher Permission	11-12 Elective credit option—1 credit	11-12 Elective - 1 Credit
--	----------------------	--------------	--	--	----------------------------------

Students will work with the latest technology to produce a quality yearbook. They will acquire a comfortable working knowledge of the use of current desktop publishing hardware and software to enhance employment skills and problem-solving abilities.

Photographs are taken using digital SLR cameras and the latest digital manipulation software. Students will be provided with a workplace-oriented environment and a team-oriented, productive experience. Fundraising activities will also be required. Yearbook requires a yearlong commitment and a great deal of out of school time. Be prepared to work hard to produce a quality yearbook!

NOTE: While this class does count as a QA English course, IT DOES NOT FULFILL THE USD 113 CRITERIA FOR AN ENGLISH/LANGUAGE ARTS COURSE.

MATHEMATICS

Algebra 1	MA216A/MA216B	02052	Prerequisite(s): NA	9-12—Math credit option—1 credit	QA—Math
------------------	----------------------	--------------	-------------------------------	---	----------------

Algebra 1 is a study of the sets of real numbers and their properties. Students will write and solve first and second degree equations in one variable and first degree inequalities in one variable. Students will solve systems of linear equations and write and simplify algebraic expressions. Interactive web sites, programmable calculators, and spreadsheets will be used to solve problems with real applications. The Common Core State Standards also includes statistics and probability topics in Algebra 1.

Geometry	MA215A/MA215B	02072	Prerequisite(s): Algebra 1	10-12—Math credit option—1 credit	QA—Math
-----------------	----------------------	--------------	--------------------------------------	--	----------------

Geometry will help the student gain knowledge as well as greater power in deductive thinking. Since the time of Euclid, Geometry has stood as the subject best adapted to train students in the habits of expressing their thoughts accurately and to reason correctly. These habits are cultivated by forming conclusions about the properties of the simplest and most universally known elements (triangles, rectangles, circles, etc.). This deductive reasoning is useful in all fields of intellectual pursuit. In addition, students will review algebra skills when applying geometry postulates and theorems. Students will build models of solids when applying volume and area formulas. The Common Core State Standards also includes statistics and probability topics in Geometry.

Algebra 2	MA217A/MA217B	02056	Prerequisite(s): Algebra 1	11-12—Math credit option—1 credit	QA—Math
------------------	----------------------	--------------	--------------------------------------	--	----------------

Algebra 2 is a thorough review and extension of Algebra I. New topics include rational and negative exponents, graphing polynomial and rational functions, matrices, logarithms, and imaginary numbers. Attention is also given to preparation for college algebra. A college bound student should make sure to have this class to have the minimum preparation for college.

College Algebra (S1)/ Trigonometry (S2)	HCCMAT104 HCCMAT105	02103	Prerequisite(s): Algebra 2 & Geometry	12—Math credit option—1 credit	QA—Math
--	--------------------------------	--------------	--	---------------------------------------	----------------

HCC MAT104 COLLEGE ALGEBRA (S1) is a comprehensive study of the fundamental laws of algebra, including exponents, linear and quadratic equations, polynomial and rational inequalities, system of equations, radicals and radical equations, functions and graphing, polynomials and polynomial equations, modeling, logarithms, complex numbers, augmented matrices, determinants, and regression. The course will provide analysis of graphs and linear systems in two or three variables, as well as applications of most of the topics listed above and others as time permits. A graphing calculator is required for this course.

HCCMAT105 TRIGONOMETRY (S2) is the study of triangles and their applications. Other topics include trig functions with graphs and identities, trigonometric equations, vectors, imaginary numbers, logarithmic equations, and sequences and series. Students will apply algebra in new situations as they derive formulas through generalizations. Students will use interactive web tools and spreadsheets as methods of solving problems with real applications. This is not a college course.

NOTE: Potential to earn 3 college credits through Highland Community College for MAT104 College Algebra and 3 college credits for HCCMAT105 Trigonometry. This course is taught online by an HCC instructor. *HCC registration should occur in October-December prior to the start of the second semester for spring MAT104 enrollment.*

Trigonometry/Precalculus	MA228A/MA228B	02103	Prerequisite(s): Algebra 2 & Geometry	11-12—Math credit option—1 credit	QA—Math
---------------------------------	----------------------	--------------	--	--	----------------

Trigonometry is the study of triangles and their applications. Other topics include trig functions with graphs and identities, trigonometric equations, vectors, imaginary numbers, logarithmic equations, and sequences and series. Students will apply algebra in new situations as they derive formulas through generalizations. Students will use interactive web tools and spreadsheets as methods of solving problems with real applications.

BUSINESS MATH WITH ALGEBRA	MA240A/MA240B	02155	Prerequisite(s): Algebra 1	11-12—Math credit option—1 credit
---------------------------------------	----------------------	--------------	--------------------------------------	--

The primary focus of this course is to provide students with further algebraic applications while reinforcing the algebraic concepts learned in earlier courses. Business Math with Algebra is a course that will enable students to make sound financial decisions dealing with personal or business financial management issues. Topics to be covered include compound interest of loans and investments, consumer credit issues, various payment methods, insurance, the stock market, figuring taxes, inflation and deflation, and other topics in economics and business. This course is designed to increase the high school level knowledge of algebraic concepts and, in part, prepare students for admission to a university.

Trigonometry/Precalculus	MA228A/MA228B	02103	Prerequisite(s): Algebra 2 & Geometry	11-12—Math credit option—1 credit	QA—Math
--------------------------	---------------	-------	---	--------------------------------------	---------

Trigonometry is the study of triangles and their applications. Other topics include trig functions with graphs and identities, trigonometric equations, vectors, imaginary numbers, logarithmic equations, and sequences and series. Students will apply algebra in new situations as they derive formulas through generalizations. Students will use interactive web tools and spreadsheets as methods of solving problems with real applications.

SCIENCE

Physical Science	SCI624A/SCI624B	03159	Prerequisite(s): NA	R9—Science—1 credit	QA—Science
------------------	-----------------	-------	------------------------	------------------------	------------

A freshman level course required for graduation. This course is an introductory survey of chemistry (involving the study of the structure of matter, states of matter and their physical and chemical interactions), physics (involving the study of energy, waves, and electromagnetism) and earth science (involving the study of Earth's cycles and hazards). It is a lab intensive course with particular emphasis on the practices of science and engineering as well as the cross-cutting concepts of science. The focus of the course is to target the performance expectations of the Kansas College and Career Readiness Science Standards.

Biology 1	SCI606A/SCI606B	03051	Prerequisite(s): Physical Science	R10—Science—1 credit	QA—Science
-----------	-----------------	-------	--------------------------------------	-------------------------	------------

A lab science course required of sophomores. Biology 1 covers general principles of biology, the study of living things—scientific method, ecology, metabolism, cellular biology, genetics, reproduction, microscopic organisms, plants, animals and much more!

NOTE: Biology 1 is an introductory level course in the Biomedical pathway.

Anatomy/Physiology	SCI609A/SCI609B	03053	Prerequisite(s): Biology 1 & concurrent enrollment in or completion of Chemistry	11-12—Science credit option—1 credit	QA—Science
--------------------	-----------------	-------	--	--	------------

This course covers the anatomical study of the systems forming the human body. Emphasis is placed on the organs forming each system, the embryonic development of the system, and the functions of the tissues and organs of each system. A brief physiological review is covered with each system. Recommended for students interested in nursing, veterinary work, any medical field, or anyone with an interest in the miraculous human body! Coursework involves dissection of a cat and various body parts.

NOTE: Anatomy/Physiology is a technical level course in the Biomedical pathway.

Chemistry 1	SCI608A/SCI608B	03101	Prerequisite(s): Physical Science & Algebra 1	11-12—Science credit option—1 credit	QA—Science
-------------	-----------------	-------	---	--	------------

This course is intended to serve as a foundation for college level chemistry courses. Areas of focus are the design and use of the periodic table, proper lab techniques, lab safety procedures, and advanced problem solving in chemistry. Topics covered include structure of the atom, organization of the periodic table, stoichiometry, gas laws, and solution concentrations. It is highly recommended that students have completed biology before chemistry. Algebra 2 or concurrent enrollment in Algebra 2 is also highly recommended.

Physics	SCI610A/SCI610B	03151	Prerequisite(s): Physical Science, Algebra 2 & Geometry	11-12—Science credit option—1 credit	QA—Science
---------	-----------------	-------	--	--	------------

This course is intended to serve as a foundation for college level physics courses. Areas of focus are performing long term science/research projects, application of equations to practical situations, and advanced problem solving in physics. Topics will include mechanics, thermodynamics, light, sound, and nuclear physics. Trigonometry or concurrent enrollment in Trigonometry is highly recommended. **NOTE: Curriculum is provided through online instruction.**

Animal Science (Scheduled every other year) 2022-2023 2024-2025	SCI611A/SCI611B	18101	Prerequisite(s): Intro to Agriculture	10-12—Science credit option—1 credit	QA—Science
---	------------------------	--------------	---	---	-------------------

This course may fulfill a student’s science elective graduation requirement. A continuation into the various disciplines of animal science. A great course for learning the general biology of animals and the skills needed to correctly manage them. Units covered in this course include leadership, anatomy & physiology, traditional domestic livestock management (beef, sheep, swine, horse, dairy, etc.), record keeping, non-traditional livestock management (bison, llama, aquaculture, apiculture, etc.), genetics, nutrition, animal behavior and facility design.

NOTE: Animal Science is a technical level course in the Animal Science & Comprehensive Agriculture Science pathways.

Plant & Soil Science (Scheduled every other year) 2021-2022 2023-2024	AG1106A/AG1106B	18058	Prerequisite(s): NA	10-12—Science credit option—1 credit	QA—Elective
---	------------------------	--------------	-------------------------------	---	--------------------

This course will teach students the practical knowledge and skills needed to successfully manage plants and soil resources. Units covered in this course include: leadership, integrated pest management, plant physiology, soil science & evaluation, supervised agricultural experience projects, record keeping, crop production, floriculture, greenhouse and/or nursery management, landscape design, construction and maintenance.

NOTE: Plant & Soil Science is a technical level course in the Comprehensive Agriculture Science pathway.

SOCIAL STUDIES

World History	SOC501A/SOC501B	04051	Prerequisite(s): NA	R9—Social Science—1 credit	QA—Social Science
----------------------	------------------------	--------------	-------------------------------	-----------------------------------	--------------------------

World History studies world history from a cultural viewpoint, incorporating world religions, music, and geography into the classroom. This class will begin with the Renaissance and culminate with the 20th Century.

American History	SOC502A/SOC502B	04101	Prerequisite(s): NA	R10—Social Science—1 credit	QA—Social Science
-------------------------	------------------------	--------------	-------------------------------	------------------------------------	--------------------------

An overview of the history of our country. Course content begins with the Industrial Revolution (late 1800’s) and continues on to modern day America. The focus is on America’s growth into a world power by becoming an industrialist nation and how policies changed from isolationism to interventionism.

American Government	SOC504A/SOC504B	04151	Prerequisite(s): NA	R11—Social Science—1 credit	QA—Social Science
----------------------------	------------------------	--------------	-------------------------------	------------------------------------	--------------------------

This class is a study of the American political system. The U. S. system is compared with others around the world and studied in detail. Topics include heritage of the U. S. system of government, the Constitution, civil rights, politics, congress and the presidency.

FINE ARTS

Band	FA910A/FA910B	05101	Prerequisite(s): Past enrollment in Band or instructor's permission	9-12—Fine Art credit option—1 credit	QA—Elective
-------------	----------------------	--------------	---	---	--------------------

Band is offered to all students who have previously studied an instrument for this medium. Students will study and participate in Marching Band during football season, Pep Band during basketball season and Concert Band throughout the year. The band travels to a number of different events throughout the year as well as works with different clinicians and artists. Students are expected to perform outside of the normal school day.

Concert Choir	FA912A/FA912B	05110	Prerequisite(s): NA	9-12—Fine Art credit option—1 credit	QA—Elective
----------------------	----------------------	--------------	-------------------------------	---	--------------------

Concert Choir is open to all students. While in this class, students will sing and acquire knowledge of notation and performance techniques for better ensemble singing. This choir will explore many styles and periods of music. Concert Choir will participate in school concerts and contests. There is some cost and students will be required to perform outside the school day for special rehearsals, concerts, or community groups.

FOREIGN LANGUAGE

Spanish 1	FL1001A/FL1001B	06101	Prerequisite(s): NA	9-12—Elective credit option—1 credit	QA—Elective
------------------	------------------------	--------------	-------------------------------	---	--------------------

Spanish 1 is an introduction to Spanish as a second language. It involves an interactive study of basic vocabulary, grammar, speaking, listening, and writing skills. It also includes a study of the geography, food, and cultural themes relevant to the Spanish-speaking world today. Students will be expected to come to class with a positive attitude and to practice the language both in and out of class.

NOTE: Curriculum is provided through online or IDL instruction.

Spanish 2	FL1002A/FL1002B	06102	Prerequisite(s): Spanish 1	10-12—Elective credit option—1 credit	QA—Elective
------------------	------------------------	--------------	--------------------------------------	--	--------------------

Spanish 2 is a continuation and expansion of the vocabulary and grammar learned in Spanish 1. Students will be introduced to more difficult grammar concepts, including past tenses, and are exposed to more in-depth cultural themes relevant to the Spanish-speaking world today. Students will be expected to come to class with a positive attitude and to practice the language both in and out of class.

NOTE: Curriculum is provided through online instruction.

PHYSICAL/HEALTH EDUCATION

Physical Education 1	PE701A/PE701B	08001	Prerequisite(s): NA	R9—PE/Health—1 credit	NOT QA
---------------------------------	----------------------	--------------	-------------------------------	---------------------------------	---------------

This course introduces freshmen to concepts of physical education, such as cardiovascular endurance, flexibility, muscular endurance, strength, obesity and weight control, posture, stress and chemical awareness. Also, students will be introduced to various team sports, including flag football, softball, wrestling, basketball and volleyball. In addition, students will participate in individual lifetime activities and non-traditional team sports such as swimming, badminton, ping-pong, brisquetball, and frisbee. This course satisfies the state requirement of one semester health and one semester of P.E. and includes a 9-week unit each in chemical awareness, human sexuality, nutrition, and improving self-esteem.

NOTE: Students can enroll in a maximum of TWO Physical/Health Education Courses.

Physical Education 2	PE702A/PE702B	08049	Prerequisite(s): Physical Education 1	10-12—Elective credit option—1 credit	NOT QA
---------------------------------	----------------------	--------------	---	---	---------------

The emphasis of the class is developing proficient skills for lifetime sports activities such as brisquetball, swimming, volleyball, badminton, table tennis, and frisbee, as well as non-traditional team sports. Proper behavior, rules, and fundamentals will be emphasized.

NOTE: Students can enroll in a maximum of TWO Physical/Health Education Courses.

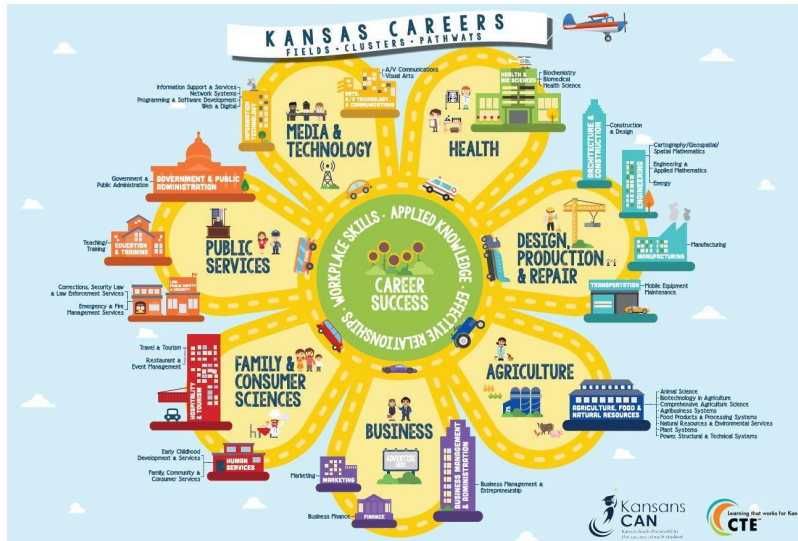
General Physical Conditioning	PE703A/PE703B	08009	Prerequisite(s): NA	10-12—Elective credit option—1 credit	NOT QA
--	----------------------	--------------	-------------------------------	---	---------------

This class places an emphasis on weight training for strength development of all muscle groups. Agility will be done with major emphasis on flexibility, foot speed, core body, and endurance. Proper lifting techniques, safety, and spotting procedures will be taught to develop the total body. A major assessment will be performed once every nine weeks on mental and physical toughness.

NOTE: Students can enroll in a maximum of TWO Physical/Health Education Courses.

CAREER AND TECHNICAL EDUCATION PATHWAY INFORMATION

Axtell High School offers four Career and Technical Education (CTE) pathways. These pathways are connected to the National Career Cluster model utilized by Kansas. Technological advances and global competition have transformed the nature of work. Tomorrow’s jobs will require additional knowledge, improved skills and highly flexible workers who continually update their knowledge and skills. The goal of Kansas CTE is to provide students with relevant contexts for learning through pathways to college and career readiness. Career Clusters link what students learn in school to the knowledge and skills they need for success in post-secondary education and careers. *(adapted from the 2020-21 Career Cluster Guidance Handbook)*



Below you will find a summary of each CTE pathway available at **Axtell High School**. Course descriptions follow. Please speak with pathway instructors for more information on CTE credits and articulation agreements.

Pathway	Instructional Level		
	Introductory	Technical	Application
Finance Career Cluster—Business Finance Pathway	<ul style="list-style-type: none"> ●Business Essentials (.5 credit) 	<ul style="list-style-type: none"> ●Accounting (1 credit) ●Consumer & Personal Finance (.5 credit) ●Entrepreneurship (.5 credit) 	<ul style="list-style-type: none"> ●Advanced Accounting (1 credit)
Agriculture, Food & Natural Resources Career Cluster—Comprehensive Agriculture Science Pathway	<ul style="list-style-type: none"> ●Intro to Agriculture (1 credit) 	<ul style="list-style-type: none"> ●Animal Science (1 credit) ●Plant & Soil Science (1 credit) 	<ul style="list-style-type: none"> ●Internship (1 credit) & Advanced Internship (1 credit) available with instructor permission
Information Technology Career Cluster—Web & Digital Communications Pathway	<ul style="list-style-type: none"> ●Computer Applications (AMS; 1 credit) 	<ul style="list-style-type: none"> ●Web Page Design (1 credit) ●Interactive Media (1 credit) 	<ul style="list-style-type: none"> ●Particular Topics in Media Technology (Instructor Permission)
Agriculture, Food & Natural Resources Career Cluster—Power, Structural & Technical Systems Pathway	<ul style="list-style-type: none"> ●Intro to Agriculture (1 credit) 	<ul style="list-style-type: none"> ●Ag Mechanics (1 credit) 	<ul style="list-style-type: none"> ●Internship (1 credit) & Advanced Internship (1 credit) available with instructor permission

FINANCE CAREER CLUSTER—BUSINESS FINANCE PATHWAY

Entrepreneurship (S1)/Business Essentials (S2)	BUS310/BUS320	12053/12050	Prerequisite(s): NA	9-12—Elective credit option—1 credit	QA—Elective
---	----------------------	--------------------	-------------------------------	---	--------------------

ENTREPRENEURSHIP (S1): You will be taken on a step-by-step journey through the entire process of owning your own business. The class will visit businesses in town monthly and see first-hand the keys of running a successful business.

BUSINESS ESSENTIALS (S2): This is a core course designed to give students an overview of the business, marketing and finance career cluster occupations. Students will develop an understanding of how academic skills in mathematics, economics, and written and oral communications are integral components of success in these occupations. Students will examine current events to determine their impact on business and industry and legal and ethical behavior, acquire knowledge of safe and secure environmental controls to enhance productivity, determine how resources should be managed to achieve company goals, and identify employability and personal skills needed to obtain a career and be successful in the workplace. As students learn about different types of business ownership, they will interpret industry laws and regulations to ensure compliance, identify principles of business management, and analyze business practices to determine ethics and social responsibilities.

Consumer & Personal Finance	BUS319A/BUS319B	22210/22220	Prerequisite(s): NA	R9—1 credit	QA—Elective (S1 only); NOT QA (S2 only)
--	------------------------	--------------------	-------------------------------	--------------------	--

Consumer and Personal Finance explores the relationship of basic money management and consumer decision-making across the lifespan. It includes an in-depth look at risk management, use of credit, consumer rights and responsibilities, setting goals and impact of the family on personal financial decision making. How to make wise choices to develop a healthy financial self will be a major component of this course as well as an introduction to the occupations related to the field.

Accounting	BUS317A/BUS317B	12104	Prerequisite(s): NA	9-12—Elective credit option—1 credit	QA—Elective
-------------------	------------------------	--------------	-------------------------------	---	--------------------

This course prepares a person to understand the concepts needed to make good business decisions and keep up-to-date financial records. Students will learn how to plan, keep, analyze, and interpret financial records.

Advanced Accounting	BUS318A/BUS318B	33108	Prerequisite(s): Accounting	10-12—Elective credit option—1 credit	NOT QA
----------------------------	------------------------	--------------	---------------------------------------	--	---------------

This course is a continuation of Accounting but goes into more detail. It also offers accounting procedures used by partnerships and corporations on the computer.

Particular Topics in Media Technology	10204S1/10204S2	10204	Prerequisite(s): Instructor permission	10-12—Elective credit option—1 credit	NOT QA
--	------------------------	--------------	--	--	---------------

Particular Topics in Media Technology is a course that allows students the freedom to set their own course toward developing their media technology skills and interests. It is a great place for students to explore new technologies, further develop interests, or begin preparation for a new skill or career. Students will have input into their own individualized syllabus and be free to work at a pace that allows them to learn as much as possible.

AGRICULTURE, FOOD & NATURAL RESOURCES CAREER CLUSTER
—COMPREHENSIVE AGRICULTURE SCIENCE PATHWAY

Intro to Agriculture	AG1100A/AG1100B	18001	Prerequisite(s): NA	9-12—Elective credit option—1 credit	QA—Elective
-----------------------------	------------------------	--------------	-------------------------------	---	--------------------

The Intro to Agriculture course surveys a wide array of topics within the agricultural industry, exposing students to the many and varied types of agriculture and livestock career opportunities and to those in related fields (such as natural resources). This course serves to introduce students to the agricultural field, providing them an opportunity to identify an area for continued study or to determine that their interest lies elsewhere. They often focus on developing communication skills, business principles, and leadership skills.

Animal Science	SCI611A/SCI611B	18101	Prerequisite(s): Intro to Agriculture	10-12—Science credit option—1 credit	QA—Science
-----------------------	------------------------	--------------	---	---	-------------------

See description for ANIMAL SCIENCE under SCIENCE course listings.

Plant & Soil Science	AG1106A/AG1106B	18058	Prerequisite(s): NA	10-12—Science credit option—1 credit	QA—Elective
---------------------------------	------------------------	--------------	-------------------------------	---	--------------------

See description for PLANT & SOIL SCIENCE under SCIENCE course listings.

AG1107A/AG1107B Internship and AG1108A/AG1108B Advanced Internship are available with instructor permission. (NOT QA)

INFORMATION TECHNOLOGY CAREER CLUSTER
—WEB & DIGITAL COMMUNICATIONS PATHWAY

Web Page Design	TECH312A/TECH312B	10201	Prerequisite(s): Computer Applications I	10-12—Elective credit option—1 credit	QA—Elective
------------------------	--------------------------	--------------	--	--	--------------------

This course is designed to teach the fundamentals of hypertext markup language (HTML) and teach the fundamentals of using graphical user interface (GUI) applications for web page design. Included will be the development of personal web pages, commercial web pages, and development/maintenance of the **Axtell High School** website. After completion of this course, students will be able to create web pages using hypertext, hyperlinks, tables, forms, graphics, and style sheets. Students will be able to use Adobe Dreamweaver in conjunction with Adobe Photoshop, Adobe Flash, and Windows Moviemaker to create multifaceted websites.

Interactive Media	TECH324A/TECH324 B	10203	Prerequisite(s): Computer Applications I	10-12—Elective credit option—1 credit	QA—Elective
--------------------------	---------------------------	--------------	--	--	--------------------

Interactive Media courses provide students with the knowledge and skills to create, design, and produce interactive media products and services. The courses may emphasize the development of digitally generated and/or computer-enhanced media. Course topics may include 3D animation, graphic media, web development, and virtual reality. Upon completion of these courses, students may be prepared for industry certification.

AGRICULTURE, FOOD & NATURAL RESOURCES CAREER CLUSTER
—POWER, STRUCTURAL & TECHNICAL SYSTEMS PATHWAY

Intro to Agriculture	AG1100A/AG1100B	18001	Prerequisite(s): NA	9-12—Elective credit option—1 credit	QA—Elective
-----------------------------	------------------------	--------------	-------------------------------	---	--------------------

See description for INTRO TO AGRICULTURE under Agriculture, Food & Natural Resources Career Cluster—Animal Science Pathway course listings.

Ag Mechanics	AG1110A/AG1110B	18401	Prerequisite(s): NA	10-12—Elective credit option—1 credit	QA—Elective
---------------------	------------------------	--------------	-------------------------------	--	--------------------

This course has been designed with the purpose of introducing students to the basic principles of agricultural mechanics. It will provide students with instruction in technical and basic concepts as well as hands-on practical application and practice. Units you will receive instruction in include: career exploration, safety & shop management, shielded metal arc welding (Arc), oxyacetylene heating, cutting, brazing & welding, plasma arc cutting, hand woodworking & metalworking, power tool use, gas metal arc welding (MIG), project planning, painting, electricity, plumbing, concrete & masonry, agricultural structures, supervised agricultural experience projects and record keeping.

Adv Ag Mechanics	AG1111A/AG1111B	18402	Prerequisite(s): Ag Mechanics	11-12—Elective credit option—1 credit	QA—Elective
-------------------------	------------------------	--------------	---	--	--------------------

This course focuses on advanced development of fabrication and construction skills established in Ag Mechanics. Students must be prepared to provide their own projects. Other topics to be covered will include: metallurgy, career exploration, metal lathe work, tungsten inert gas welding (TIG), supervised agricultural experience projects and record keeping.

AG1107A/AG1107B Internship and AG1108A/AG1108B Advanced Internship are available with instructor permission.
(NOT QA)

ADDITIONAL ELECTIVE OPTIONS

PROFESSIONAL LEARNING EXPERIENCE	22998S1/22998S2	22998	Prerequisite(s): PLE paperwork due by April 1	11 & 12—Elective credit option—1 credit; PASS/FAIL
---	------------------------	--------------	---	---

JUNIORS are permitted to enroll in one period of Professional Learning Experience. SENIORS are permitted to enroll in two periods of Professional Learning Experience.

The Professional Learning Experience (PLE) course connects technical skill development at the application level to authentic industry-related experiences for the individual student learner across all fields and pathways. The PLE course is designed for students who want to gain experience working in a job that is directly tied to a class in which the student is enrolled. The academic and occupational skills that the student will be learning need to be at the same skill level as the course in which the student is enrolled. **To secure the PLE course request, a completed application must be submitted to the school counselor on or before April 1. A relationship among Career Interest + Course on Schedule + Professional Learning Experience placement must be evident.** Students may enroll in PLE for 1 class period or 2 class periods (*seniors only*), with .5 credit awarded per class period each semester upon successful completion of the Professional Learning Experience requirements. The class is PASS/FAIL.

Driver’s Education (8th Grade) OR Driver’s Ed	EL1200/EL1209	08152	Prerequisite(s): 14 years of age; enrollment paperwork & fee	8-12—Elective credit option—.5 credit (if taken at the high school level)	NOT QA
---	----------------------	--------------	--	--	---------------

Driver’s Education is limited to students who are 14 years of age on or before the first day of class and who will be entering the ninth grade. Students are encouraged to obtain their instructional permits (for which they are eligible at 14) from the local Department of Motor Vehicles (DMV) and begin practicing with parents before class begins. The Driver’s Education course is a tuition-based class; the entire fee is due on or before the first day of class.

The Driver’s Education class has three components: classroom work, range driving, and road driving. The classroom and range driving portions of the class must be passed successfully in order to complete the road driving section. During the classroom section, students will study driving from an educational viewpoint. The information provided during the class section will be put into use both on the range and on the road. Lectures, quizzes, discussions, tests, and projects will be an important part of this class. Students should come prepared to class to take notes and study for tests. The range portion of the class gives students the chance to drive a variety of vehicles in the high school parking lot. The parking lot will be set up with cones to allow students to practice “town” driving and parking situations including pulling into and backing into a garage, angle and parallel parking, changing lanes, signaling, stopping at stop signs, yielding the right of way, and maintaining control of the vehicle. The road driving portion of the test includes town and highway driving. Students should be prepared to spend several hours on the road both driving and observing their fellow drivers. If a student successfully completes all components of the driver’s education course, he/she will be given a completion slip to turn in at the DMV, which will waive the written and driving tests. The eye test must still be passed.

NOTE: If Driver’s Education is taken prior to high school entry (summer following 8th grade), a letter grade is awarded, but no high school credit is earned. If Driver’s Education is taken after high school entry, a letter grade and high school credit are awarded.

AES Teacher Aide	EL1204A/EL1204B	22995	Prerequisite(s): 3.0000 cumulative GPA required; instructor & building administrator permission required	11-12—Elective credit option—1 credit; PASS/FAIL	NOT QA
AMS Teacher Aide	EL1203A/EL1203B				
AHS Teacher Aide	EL1202A/EL1202B				
AHS Office Aide	EL1205A/EL1205B				

Students enrolled in Teacher/Office Aide courses provide assistance to adults in the classroom or school office setting. 3.0000 cumulative GPA required; instructor & building administrator permission required. Pass/Fail grade (does not contribute GPA or rank points). A student may have one teacher/office aide position per semester. Students are not allowed to aid an immediate family member.

Seminar	EL1208A/EL1208B	22106	Prerequisite(s): NA	R9-12—NO CREDIT!	NOT QA
----------------	------------------------	--------------	-------------------------------	-------------------------	---------------

Seminar is designed to provide students time within the school day to study and complete tasks in remaining classes.

Study Skills*	EL1207A/EL1207B	22003	Prerequisite(s): Requires Special Education IEP to enroll	9-12—Elective credit option—1 credit	NOT QA
---------------	-----------------	-------	--	--------------------------------------	--------

Study Skills* is designed to provide Special Education students time within the school day to study and complete tasks in remaining classes. A Special Education IEP is required for enrollment.

Highland Community College Online Courses	Varies	Varies	Prerequisite(s): cannot be requested in top 7 courses; must provide proof of enrollment with HCC prior to adding course to USD 113 schedule; must fulfill any prerequisites set forth by HCC	11-12—Elective credit option—credit varies/semester	QA—status TBD
---	--------	--------	---	---	---------------

Highland Community College online courses cannot be requested in top 7 courses; must provide proof of enrollment with HCC prior to adding course to USD 113 schedule; must fulfill any placement guidelines/prerequisites set forth by HCC. Students are responsible for tuition and purchasing books for the course. If taking online courses, a minimum of three credit hours must be taken per class period. The maximum amount of hours that can be taken in one class period is six. Classes offering 1-2 credits HCC credits will be awarded .25 high school credits. Classes offering 3-4 HCC credits will be awarded .5 high school credits. A high school credit of 1 will be awarded for courses that are 5 or more hours of college credit. The grade issued is determined by HCC faculty.

NOTE: HCC does not award “+’s” or “-’s” (i.e. no A+, A-, etc.). Additionally, an actual final percent is unavailable on some occasions. That means, while a student may have scored in the 98% range, HCC considers that an A. In this situation, if the final percent is not shown at the conclusion of the class, *an A will be entered as the final grade.* This practice will be applied in all situations if the final percent is not provided.

HIGHLAND COMMUNITY COLLEGE —WESTERN CENTER PROGRAMS

To enroll in any program listed below, students must be in grades 11-12. Note the following programs and WorkKeys Reading for Information & Applied Mathematics scores required for graduation (program entry scores are no more than 1 level below the graduation requirement):

HCC Western Center Program	WorkKeys Scores Required to Graduate	
	Reading for Information	Applied Mathematics
Construction Technology	4	4
Diesel Technology	5	5
Engineering Graphics	5	5
Industrial Welding	4	4
Manufacturing Technology	Course-by-course program; no WorkKeys score set at this time	
Medical Office Assistant	5	4
Precision Agriculture	5	5

SPECIAL SCHOOL INFORMATION

SCHEDULE CHANGES

S1 schedule changes must be completed by the end of the FOURTH school day of S1. S2 schedule changes must be completed within the last FOUR SCHOOL DAYS of S1. Students wishing to change classes should make such a request to the principal or counselor and state their reasons for the request in addition to completing all necessary paperwork. Permission for the change must be given by the teacher of the new class to be taken, the instructor of the course being dropped, parents/guardians and administration.

STUDENT GRADE LEVEL CLASSIFICATION

In August of each year, students will be classified in 9, 10, 11 or 12 grade level based on having earned the following minimum number of credits:

▶ **Grade 9**=0 Credits ▶ **Grade 10**=5 Credits ▶ **Grade 11**=10 Credits ▶ **Grade 12**=17 Credits

GRADING SYSTEM

Grades are computed on a cumulative grading system throughout the semester. The nine-week grade is a mid-term report and will continue to accumulate from the first nine weeks to the end of the semester. Grades start new at the beginning of each semester. (For students who have just completed their freshmen—or above—year of school, Driver’s Education is considered to be a high school class and counts as an elective toward graduation. It is counted as part of a student’s Grade Point Average.) Students who have just completed their 8th grade year will have Driver’s Education count as a middle school course. **AHS** uses a 4-point scale to award grades:

▶ 90-100	A=4.0000 ◀	▶ 60-69	D=1.0000 ◀
▶ 80-89	B=3.0000 ◀	▶ 59 & below	F=0.0000 ◀
▶ 70-79	C=2.0000 ◀		

CLASS RANK, VALEDICTORIAN(S) & SALUTATORIAN(S)

Class Rank & Valedictorian(s) and Salutatorian(s) will be selected annually from the graduating seniors. Valedictorian is the name given to the student(s) who academically complete(s) the high school years with the highest cumulative grade point average. Salutatorian is second. Selection will be based on the completion of eight complete semesters of high school (in addition to summer school, Driver’s Education, etc.). If ties exist, all students who are tied will be co-valedictorians or co-salutatorians.



HONOR ROLL

Grade cards are issued to the students at the end of each semester as listed in the school calendar. All subject grades will be used in computing honor rolls. Three honor rolls will be computed. One will represent a 4.0000 (all “A” grades); one will represent a 3.5000-3.9999 grade point average with no grade lower than a C-; the last one will be students with 3.0000-3.4999. A student must be enrolled in a minimum of six classes to be eligible for the honor roll.

Credit Check

AXTELL HIGH SCHOOL	KANSAS SCHOLARS	NCAA
<p>* REQUIRED to earn an AHS diploma; for ALL students</p>	<p>★ RECOMMENDED for admission at six KS Regents Universities (ESU, FHSU, KSU, KU, PSU, WSU)</p> <p>★ REQUIRED to apply for state-sponsored scholarship (the program levels also consider cumulative GPA, ACT & financial need)</p>	<p>★ REQUIRED for NCAA Division I & Division II activities; Division I curriculum listed below</p>
<p>ENGLISH—4 UNITS</p> <p>___ ___ English 1 ___ ___ English 2 ___ ___ English 3</p> <p>* _____</p> <p>*4th credit options include: Advanced Comp, Comp I** (.5 credit); Comp II** (.5 credit); Speech, Public Speaking ** (S1; .5 credit), Literature/Introduction to Literature ** (S1; .5 credit) (S2; .5 credit)</p> <p>**potential for high school & college credit</p>	<p>ENGLISH—4 UNITS (1 credit of English per year REQUIRED)</p> <p>___ ___ English 1 ___ ___ English 2 ___ ___ English 3 ___ ___ Advanced Comp. OR Comp I** & II** OR Introduction to Literature**</p> <p>**potential for high school & college credit</p>	<p>ENGLISH—4 UNITS</p> <p>___ ___ English 1 ___ ___ English 2 ___ ___ English 3 ___ ___ Advanced Comp OR Comp I** & II** ___ ___ Speech (S1; .5 credit) ___ ___ Literature/Intro to Literature **</p> <p>**potential for high school & college credit</p>
<p>MATH—3 UNITS</p> <p>___ ___ * _____ ___ ___ * _____ ___ ___ * _____</p> <p>*Options include: Algebra 1; Algebra 2; Geometry; College Trigonometry** (S1; .5 credit)/ College Algebra** (S2; .5 credit), Trig/PreCalc., Business Math with Algebra</p> <p>**potential for high school & college credit</p>	<p>MATH—4 UNITS*—AT OR ABOVE THE LEVEL OF ALGEBRA 1:</p> <p>___ ___ Algebra 1 ___ ___ Algebra 2 ___ ___ Geometry ___ ___ College Trigonometry ** (S1; .5 credit)/ College Algebra** (S2; .5 credit) ___ ___ Tri/PreCalc</p> <p><i>*Course sequence must include Algebra 1, Algebra 2, Geometry + 1 additional credit of advanced math.</i></p> <p>**potential for high school & college credit</p>	<p>MATH—3 UNITS*—AT OR ABOVE THE LEVEL OF ALGEBRA 1:</p> <p>___ ___ Algebra 1 ___ ___ Algebra 2 ___ ___ Geometry ___ ___ College Trigonometry** (S2; .5 credit)/ College Algebra** (S1; .5 credit)</p> <p><i>*Mathematics courses completed in middle school will not count toward the NCAA requirement.</i></p> <p>**potential for high school & college credit</p>
<p>NATURAL SCIENCE—3 UNITS</p> <p>___ ___ Physical Science ___ ___ Biology 1 ___ ___ * _____</p> <p>*3rd credit options include: Anatomy/Physiology; Chemistry I; Physics, Plant and Soil Science, Animal Science</p>	<p>NATURAL SCIENCE—3 UNITS*</p> <p>___ ___ Biology 1 ___ ___ Chemistry 1 ___ ___ Physics</p> <p><i>*Students are strongly encouraged to take four years of science.</i></p>	<p>NATURAL/PHYSICAL SCIENCE—2 UNITS*</p> <p>___ ___ Physical Science* ___ ___ Biology 1* ___ ___ Anatomy/Physiology* ___ ___ Chemistry 1* ___ ___ Physics</p> <p><i>*Denotes science with lab.</i></p>
<p>SOCIAL SCIENCE—3 UNITS</p> <p>___ ___ World History ___ ___ American History ___ ___ American Government</p>	<p>SOCIAL SCIENCE—3 UNITS</p> <p>See high school curriculum; the requirements are the same.</p>	<p>SOCIAL SCIENCE—2 UNITS</p> <p>___ ___ World History ___ ___ American History ___ ___ American Government</p>
<p>FINE ARTS—1 UNIT</p> <p>___ ___ *</p> <p>*Options include: Band; Choir</p>	<p>FOREIGN LANGUAGE—2 UNITS</p> <p>Students are required to complete two years of one foreign language.</p> <p>___ ___ Spanish 1 (<i>online only</i>) ___ ___ Spanish 2 (<i>online only</i>)</p> <p>LEVELS OF KANSAS SCHOLARS PROGRAM</p> <ol style="list-style-type: none"> 1. Complete the KS Scholars curriculum 2. Name, GPA & ACT submitted for review (a typical KS Scholar has a 30+ ACT & 3.9000+ GPA) 3. Designated scholars named 4. Designated scholars can apply for scholarships 	<p>1 UNIT—ADDITIONAL ENGLISH, MATH, OR SCIENCE</p> <p>_____ *</p>

Credit Check Continued...

AXTELL HIGH SCHOOL contd. * REQUIRED to earn an AHS diploma; for ALL students	KANSAS SCHOLARS contd. ★ RECOMMENDED for admission at six KS Regents Universities (ESU, FHSU, KSU, KU, PSU, WSU) ★ REQUIRED to apply for state-sponsored scholarship (the program levels also consider cumulative GPA, ACT & financial need)	NCAA contd. ★ REQUIRED for NCAA Division I & Division II activities; Division I curriculum listed below	
HEALTH & FITNESS—1 UNIT ___ ___ Physical Education 1	INSTITUTION	QUALIFIED ADMISSION REQUIREMENTS	4 UNITS—ADDITIONAL CORE COURSES FROM ANY AREA LISTED ABOVE OR FROM FOREIGN LANGUAGE ___ ___ Spanish 1 (<i>online only</i>) ___ ___ Spanish 2 (<i>online only</i>)
BUSINESS—1 UNIT ___ ___ Consumer & Personal Finance	Emporia State University Fort Hays State University Pittsburg State University Wichita State University	21 ACT Composite OR 2.25 cumulative GPA AND 2.0 cumulative GPA on college courses taken in high school	Division I—Qualifier Requirements ★ 16 core courses; 10 core courses to be completed prior to the 7 th semester (7 of 10 must be a combination of English, math & natural / physical science). ★ Corresponding test score (ACT sum score or SAT combined score) & core-course GPA (minimum 2.300) on Sliding Scale B ★ Graduate from high school ★ ACT code=9999
ELECTIVES—9 UNITS ___ Driver's Ed (8 th ? If yes, no credit)	 Kansas State University	21 ACT Composite OR 3.25 cumulative GPA AND 2.0 cumulative GPA on college courses taken in high school	
ADDITIONAL COURSES	 University of Kansas	21 ACT Composite AND 3.25 cumulative GPA OR 24 ACT Composite AND 3.0 cumulative GPA AND 2.0 cumulative GPA on college courses taken in high school	
TOTAL=25 UNITS	TOTAL=16 UNITS		TOTAL=16 UNITS
► CREDIT RECOVERY COURSES THROUGH EDGENUITY FULFILL USD 113 GRADUATION REQUIREMENTS ONLY ◀			

GENERAL ENROLLMENT INSTRUCTIONS

STUDENTS...

- will receive ONE four-year plan sheet (in the appropriate color).
- must submit a 4-year plan sheet **on time & on the appropriate form.**
- must submit a 4-year plan sheet **signed by parents/guardians.**
- must note courses which require **instructor and/or principal consent** & obtain signatures as needed.
- must enroll in the required classes PLUS any classes you did not pass the prior year.
- must fulfill designated **prerequisites** before attempting to enroll in a class.
- must not repeat a successfully completed course unless it is deemed repeatable.
- should note Pass/Fail courses will be marked 'P' (Pass)/'F' (Fail); therefore, no GPA & rank points are awarded.
- should note courses listed in the enrollment handbook may not appear on the final MASTER SCHEDULE due to low requests for enrollment.
- should note changes to course requests will only be made for the following reasons:
 - A. You are not enrolled in a required class.
 - B. You are enrolled in a class for which you have already received credit & it is designated "not repeatable."
 - C. You have not fulfilled prerequisites.
 - D. Your schedule is incomplete.
 - E. A teacher recommends that you advance to a higher level course or move out of the course due to semester failure.

Students or parents/guardians with questions or concerns are encouraged to contact Mrs. Ronnebaum or Mrs. Seddon at 785.736.2237, ronnebad@usd113.org or seddona@usd113.org.

2021-2022 8TH GRADE ENROLLMENT NOTES

All freshmen **MUST** take the following classes:

- ★ **ENGLISH 1**—required (1st of 4 credits);
- ★ **PHYSICAL SCIENCE**—required (1st of 3 credits);
- ★ **WORLD HISTORY**—required (1st of 3 credits);
- ★ **PHYSICAL EDUCATION 1**—required;
- ★ **MATH NOTES**—required (1st of 3 credits); students must earn at least *three math credits* to graduate. Freshmen must enroll in Algebra 1. Note that college-bound students must take 3 *or* 4 courses at the level of Algebra 1 or higher in high school in order to meet the requirements of the Qualified Admissions Curriculum.
- ★ **2 ELECTIVES**—Classes taken will depend on the interests, abilities, and future plans of the student in high school and beyond.

Potential Electives
Language Arts Options: NA
Foreign Language Options: Spanish 1 (Edgenuity)
Math Options: Math 1* (<i>requires SPED IEP</i>)
Fine Arts Options: Band, Concert Choir,
Physical Education Options: General Physical Conditioning (GPC)
Agriculture, Food & Natural Resources Career Cluster Options: Intro to Agriculture
Finance Career Cluster Options: Entrepreneurship/Business Essentials
Elective Options: Study Skills* (<i>requires SPED IEP or 504 plan</i>)

It is strongly recommended that you complete a Fine Arts course *plus* your third credit in Math *and* Science by the end of your junior year.

Question Form

Please use the space below to jot down any enrollment notes or questions.